

## EXTENDED FastClip™ ALLOWABLE LOADS (LBS)

Anchor type	Stud thickness and yield strength	No. anchors to structure	Allowable load (lbs)
Buildex #12-24 Tek 5 Self-Drilling / Screws to 3/16" Steel	20ga (33mil) 33ksi	2	689
		3	689
		4	689
	18ga (43mil) 33ksi	2	852
		3	852
		4	852
	16ga (54mil) 50ksi	2	852
		3	852
		4	852
	14ga (68mil) 50ksi	2	852
		3	852
		4	852
PAF to 3/16" Steel*	20ga (33mil) 33ksi	2	689
		3	689
		4	689
	18ga (43mil) 33ksi	2	510
		3	765
		4	852
16ga (54mil) 50ksi	2	852	
	3	852	
	4	852	
14ga (68mil) 50ksi	2	852	
	3	852	
	4	852	
12ga (97mil) 50ksi	2	852	
	3	852	
	4	852	

**Notes:**

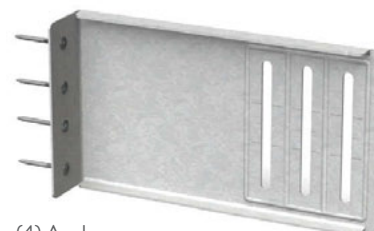
- 1 The 1/3 stress increase for wind shall not be used.
- 2 Attach building anchors to the structure according to the manufacturer's instructions. Anchors shall be installed through the embossments on the scored line of the clip as shown to the right. In no case shall anchors be installed more than 3/4" from the bend on the short leg of the clip. In cases of discrepancy between this information and the design engineer's details, the design engineer's details shall be followed.
- 3 It is the responsibility of the design professional to detail the project drawings for proper clip installation.



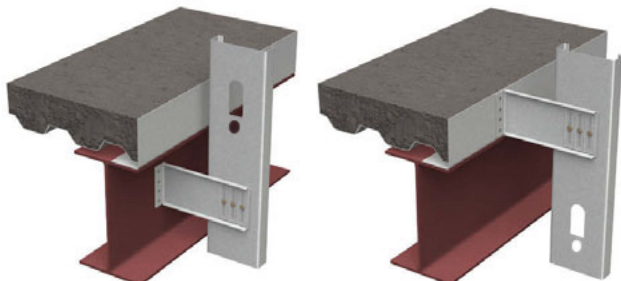
Location Options with (2) Anchors



Location Options with (3) Anchors



(4) Anchors



\*EXTENDED FastClip™ (FCEC) are distributed by Bailey Metal Products in Canada under permission granted by ClarkDietrich Building Systems. ClarkDietrich EXTENDED FastClip™ (FCEC) is a trademark of ClarkDietrich.