



ASSOCIATED GROUP
OF COMPANIES

Lightweight Steel Framing Details

Galvanized & Stainless Steel Patented Brick Connectors

Bailey Brick Connectors

Bailey Brick Connectors for steel stud wall systems meet the structural and performance requirements of CSA A370 Connectors for Masonry and CSA S304.1 Masonry Design for Buildings (Limit States Design).

Bailey offers two brick connector systems consisting of steel tie plates, v wires and fasteners:

HDG – Hot-Dip-Galvanized after fabrication system.

ESS – Economical Stainless Steel system.

Both systems include ‘side-mount’ style tie plates that attach directly to the web of the steel studs ensuring that the fasteners are located in the warm and dry cavity and loaded in shear when transferring the loads to the studs.

Tie plates are available in a variety of lengths to accommodate exterior sheathing/insulation thickness.

To simplify site coordination and ensure that brick connectors are included in the LSF Engineers design and shop drawings, brick connectors can be specified to be supplied and installed by the steel stud sub-contractor.

3" BRICK TIE CONNECTORS			
THICKNESS OF SHEATHING/INSULATION	ECONOMICAL STAINLESS STEEL	HOT-DIP GALVANIZED STEEL	STANDARD PACKAGE
1/2" OR 5/8"	ESS-3-05	HDG-3-05	125 pcs/ctn.
1"	ESS-3-10	HDG-3-10	125 pcs/ctn.
1 1/2"	ESS-3-15	HDG-3-15	125 pcs/ctn.
2"	ESS-3-20	HDG-3-20	125 pcs/ctn.
2 1/2"	ESS-3-25	HDG-3-25	125 pcs/ctn.
3"	ESS-3-30	HDG-3-30	125 pcs/ctn.
3 1/2"	ESS-3-35	HDG-3-35	125 pcs/ctn.
4"	ESS-3-40	HDG-3-40	125 pcs/ctn.
4 1/2"	ESS-3-45	HDG-3-45	125 pcs/ctn.
5"	ESS-3-50	HDG-3-50	125 pcs/ctn.

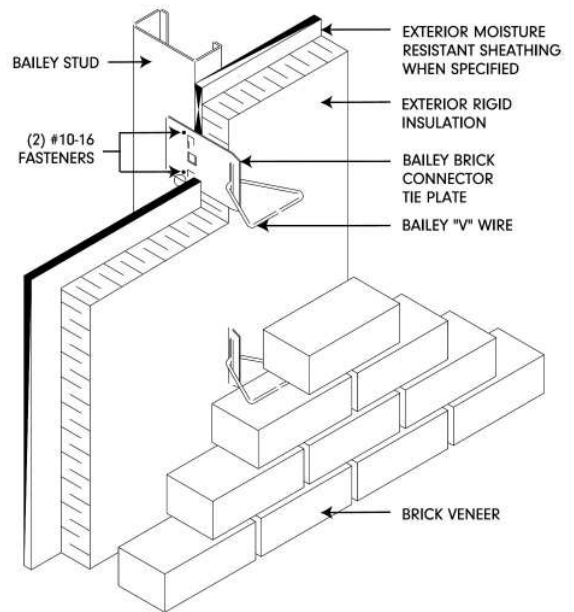
HDG BRICK TIE PLATES ARE HOT-DIP-GALVANIZED AFTER FABRICATION

"V" WIRE			
AIR SPACE	ECONOMICAL STAINLESS STEEL	HOT-DIP GALVANIZED STEEL	STANDARD PACKAGE
1"	ESSW-1	HDGW-1	250 pcs/ctn.
2"	ESSW-2	HDGW-2	250 pcs/ctn.

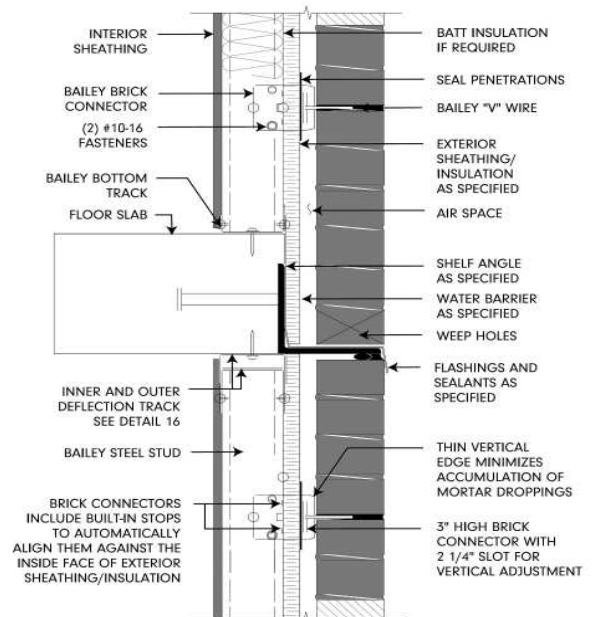
HDG V-WIRES ARE HOT-DIP-GALVANIZED AFTER FABRICATION

STEEL FASTENER			
SELF DRILLING HEX HEAD	ECONOMICAL STAINLESS STEEL	GALVANIZED STEEL	STANDARD PACKAGE
#10-16 X 3/4"	ESSF-1	HDGF-1	1000 pcs/ctn.

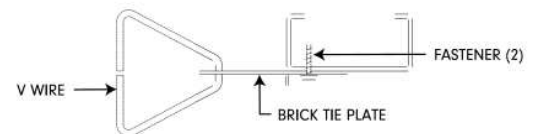
Brick Connectors to Steel Studs



Wind Bearing Steel Stud Wall with Brick Veneer and Shelf Angle (Air Barrier/Vapour barrier Not Shown)



Brick Connector Components



The material presented in this document has been prepared for the general information of the reader. While the material is believed to be technically correct and in accordance with recognized good practice, it should not be used without first securing competent advice with respect to its suitability for any specific application. Bailey Metal Products Limited does not warrant or assume liability for the suitability of the material for any general or particular use.