

BXUVC.F909 Fire-resistance Ratings

[Page Bottom](#)

Fire-resistance Ratings

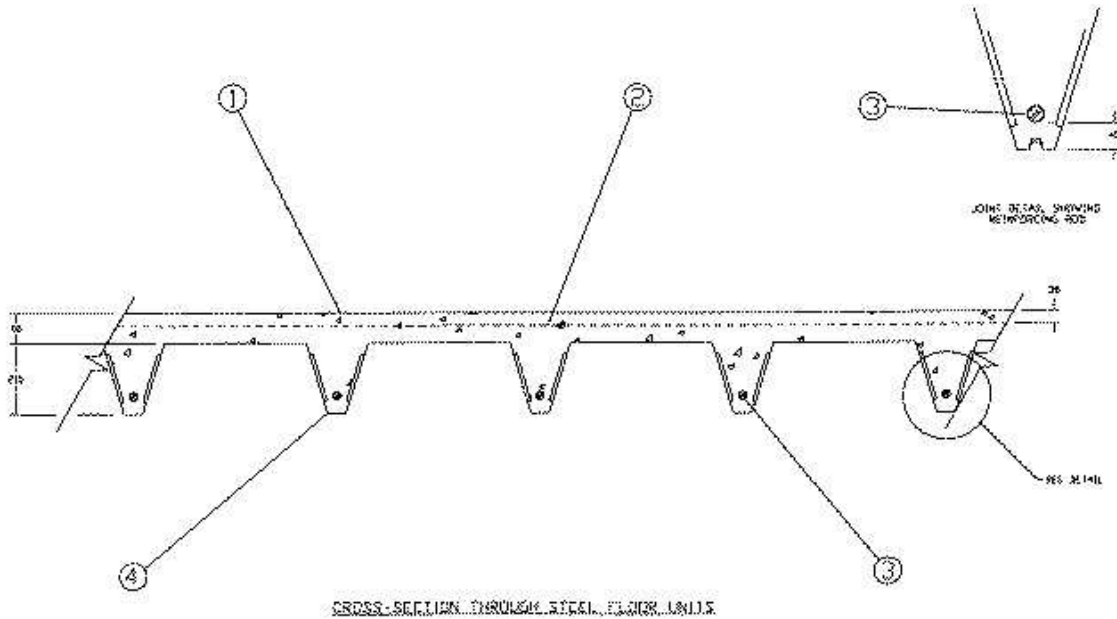
[See General Information for Fire-resistance Ratings](#)

Design No. F909

February 21, 2014

Restrained Assembly Rating - 1 or 1-1/2 h (See Item 4)

Unrestrained Assembly Rating - 0 or 1 or 1-1/2 h (See Item 4)



1. **Sand - Gravel Concrete** — Normal-density concrete of $2400 \pm 50 \text{ kg/m}^3$ density and nominal 30 MPa compressive strength. Minimum concrete topping of D as measured from the top plane of the Steel Floor Units (see Item 4).
2. **Wire Fabric** — 152 by 152 - Min wire thickness MW18.7/MW18.7 welded steel wire mesh.
3. **Rib Reinforcement** — Steel reinforcing bar having a minimum yield strength of 400 MPa sized in accordance with deck manufacturer's load tables to meet structural requirements. Rebars to be adequately supported during construction to provide a 40 mm concrete cover.
4. **Steel Floor Units** — (CHWXC). Composite galvanized steel fluted units, with minimum design thickness of 0.953 mm and yield strength of 280 MPa. Adjacent units fastened at the bottom of common flute at 350 mm OC with side lap washers and 32 mm long self-drilling fasteners as per manufacturer's instructions. Shoring of the units and end connection to independently rated concrete beams as per manufacturer's instructions. Loading of the units to be in accordance with manufacturer's load tables based on simply supported conditions. "Please consult the below-listed deck manufacturer for comprehensive load tables and design parameters associated with this assembly."

| | Concrete Topping D = 64 mm | Concrete Topping D = 90 mm |
|---------------------------------|-------------------------------|-------------------------------|
| Restrained Assembly Rating, h | 1 | 1-1/2 |
| Unrestrained Assembly Rating, h | 1 | 1-1/2 |
| (Steel Deck Span \leq 10 m) | | |

| | | |
|---------------------------------|---|---|
| Unrestrained Assembly Rating, h | 0 | 0 |
| (Steel Deck Span > 10 m) | | |

BAILEY METAL PRODUCTS LTD — Type COMSLAB™ 210 and COMSLAB™ 225

Last Updated on 2014-02-21

[Questions?](#)

[Print this page](#)

[Terms of Use](#)

[Page Top](#)

Copyright © 2013 Underwriters Laboratories of Canada Inc.

When the UL Leaf Mark is on the product, or when the word "Environment" is included in the UL Mark, please search the [UL Environment database](#) for additional information regarding this product's certification.

The appearance of a company's name or product in this database does not in itself assure that products so identified have been manufactured under ULC's Follow-Up Service. Only those products bearing the ULC Mark should be considered to be Listed and covered under ULC's Follow-Up Service. Always look for the Mark on the product.

ULC permits the reproduction of the material contained in the ULC Online Directories subject to the following conditions: 1. The Guide Information, Designs and/or Listings (files) must be presented in their entirety and in a non-misleading manner, without any manipulation of the data (or drawings). 2. The statement "Reprinted from the ULC Online Directories with permission from Underwriters Laboratories of Canada Inc." must appear adjacent to the extracted material. In addition, the reprinted material must include a copyright notice in the following format: "Copyright © 2013 Underwriters Laboratories of Canada Inc."

An independent organization working for a safer world with integrity, precision and knowledge.

