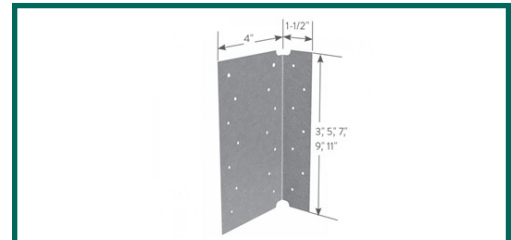


EASYCLIP™ E-SERIES™ SUPPORT CLIP

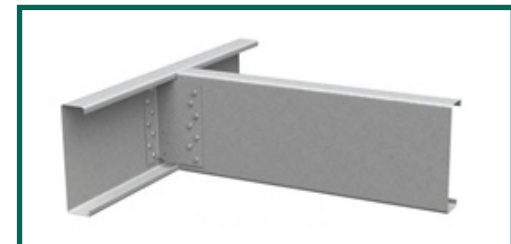
FEATURE A LONG LEG TO
ACCOMMODATE GREATER STANDOFF
FOR RIGID CONNECTIONS.

EasyClip™ E-Series™ Support Clips are used for rigid stand-off connections. The 4" wide leg provides extra length to achieve stand-off connections up to 3". They are commonly used in by-pass wall conditions, solid blocking attachments in joist framing and to secure rafter framing to the primary structure. These clips are pre-punched for faster and more accurate fastener placement.

- 4" leg accommodates large standoff.
- Lengths available in 3", 5", 7", 9" and 11".
- Available in 16, 14 and 12 gauge.



EasyClip™ E-Series™ Clip



EasyClip™ E-Series Installation

PRODUCT DATA & ORDERING INFORMATION

Product code	Gauge	Mils	Design thickness (in)	Size (in)	Pcs./Bucket
CLIP-E543	16	54	0.0566	4 x 1-1/2 x 3	100
CLIP-E545	16	54	0.0566	4 x 1-1/2 x 5	100
CLIP-E547	16	54	0.0566	4 x 1-1/2 x 7	100
CLIP-E549	16	54	0.0566	4 x 1-1/2 x 9	50
CLIP-E683	14	68	0.0713	4 x 1-1/2 x 3	100
CLIP-E685	14	68	0.0713	4 x 1-1/2 x 5	100
CLIP-E687	14	68	0.0713	4 x 1-1/2 x 7	80
CLIP-E689	14	68	0.0713	4 x 1-1/2 x 9	50
CLIP-E681	14	68	0.0713	4 x 1-1/2 x 11	50
CLIP-E975	12	97	0.1017	4 x 1-1/2 x 5	50

Material Structural Grade 50 Type H (ST50H), 50ksi
Coating G90 (Z275) hot-dipped galvanized coating

INSTALLATION

Support clips are attached to the cold-formed steel (CFS) framing members using #10 minimum self-drilling screws driven through the clip holes into the steel framing. When not filling all holes, install fasteners symmetrically starting at the top and bottom edges and move toward the center of the clip. Clip can also be welded to the CFS framing. Connections to the building frame can be made with powder-actuated fasteners, drill-in concrete anchors or welding. When using the tabular values for a welded clip, provide a full weld to the structure, top to bottom, along the outside of the clip. A 3/4" minimum weld on the outside edge of the 1-1/2" leg is also required to control warping or to hold the clip in place before final welding.