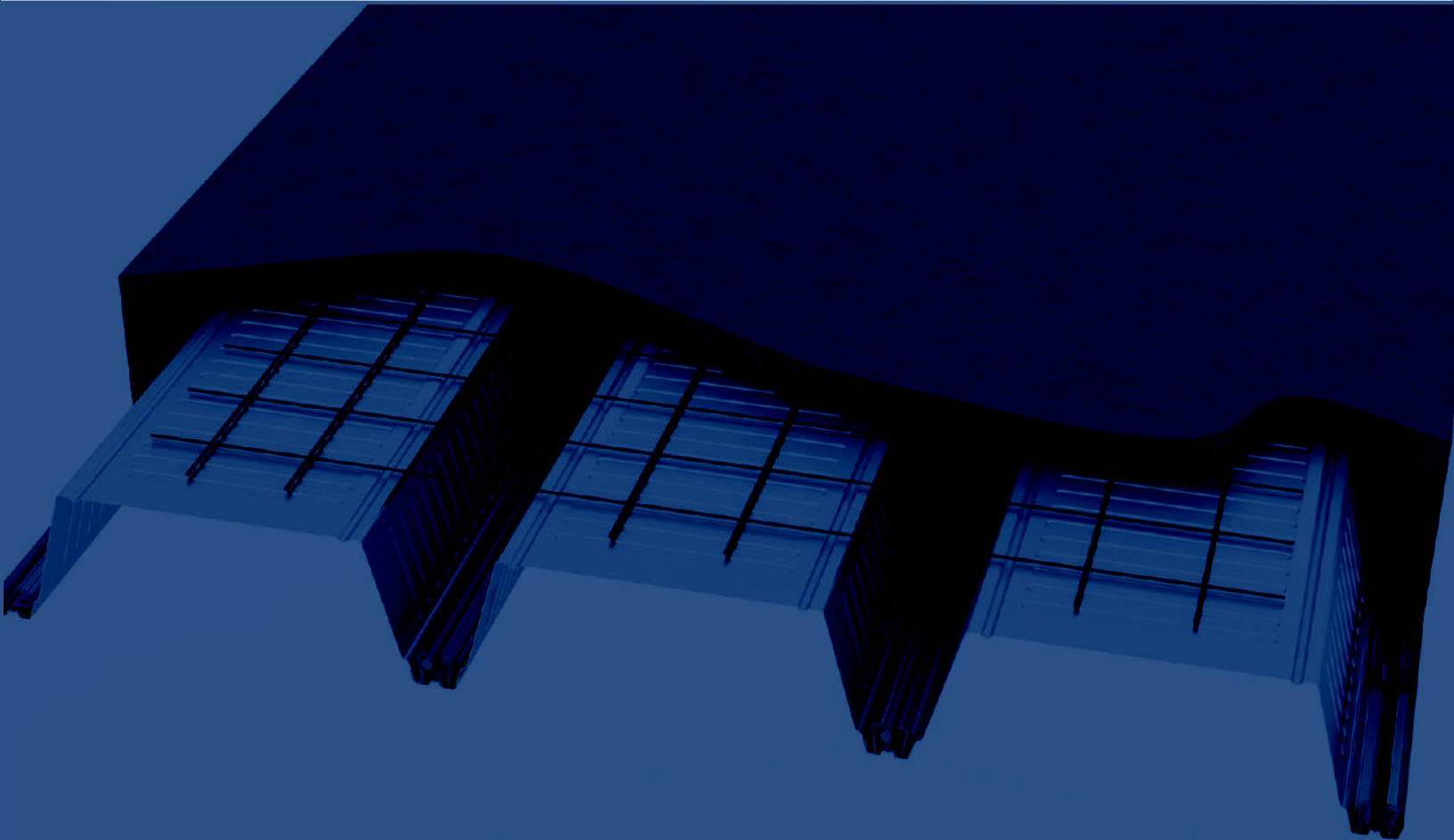


COMSLAB® LONG SPAN CONCRETE FLOOR SYSTEM



BAILEY®
METAL PRODUCTS LIMITED



THE STRENGTH WITHIN

COMSLAB USA





COMSLAB®

Long Span Concrete Floor System



COMSLAB® SPAN TABLES

8" Deck	Design Loads - Superimposed (LL40 PSF + 25 PSF)		
	20 GA		
Rebar Size	10.5 Slab Depth	10.75 Slab Depth	12.25 Slab Depth
#3	20.7	20.8	21.3
#4	22.5	22.7	23.2
#5	25.0	25.2	25.8
#6	27.4	27.6	28.1
#7	29.8	29.9	30.6
#8	32.2	32.3	33.1
#9	33.2	34.0	35.7

8" Deck	Design Loads - Superimposed (LL100 PSF + 15 PSF)		
	20 GA		
Rebar Size	10.5 Slab Depth	10.75 Slab Depth	12.25 Slab Depth
#3	16.7	16.9	17.7
#4	18.2	18.4	19.3
#5	20.3	20.5	21.3
#6	22.1	22.3	23.3
#7	24.1	24.3	25.3
#8	26.1	26.3	27.5
#9	26.9	27.5	29.7

4.75" Deck	Design Loads - Superimposed (LL40 PSF + 25 PSF)	
	20 GA	
Rebar Size	7.25 Slab Depth	8 Slab Depth
#3	17.0	18.0
#4	18.5	19.5
#5	20.0	21.0
#6	22.0	23.0
#7	23.7	24.8
#8	24.0	26.0
#9	24.0	25.0

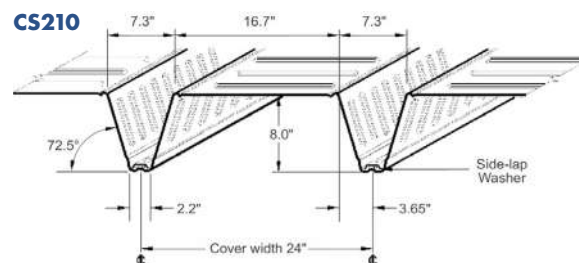
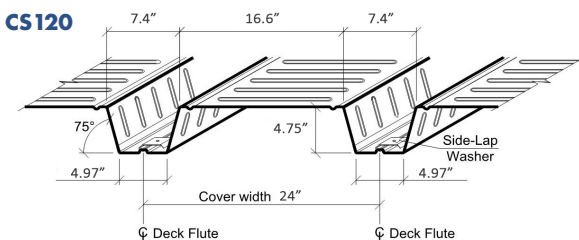
4.75" Deck	Design Loads - Superimposed (LL100 PSF + 15 PSF)		
	20 GA		
Rebar Size	7.25 Slab Depth	8 Slab Depth	9 Slab Depth
#3	14.0	14.7	15.7
#4	15.0	16.0	17.0
#5	16.0	17.3	18.2
#6	17.5	18.5	19.8
#7	19.0	20.0	21.5
#8	19.5	21.0	23.0
#9	19.5	21.5	24.0

Examples of spans based on flexural capacity & live load deflection of L/360 –detailed load tables available at http://www.iapmoes.org/Documents/ER_0277.pdf . **Note:** Spans are based on instantaneous deflection.

COMSLAB® REQUIRED TOPPING SLAB THICKNESS

COMSLAB Concrete Volume Values for Estimating											
Imperial	Slab thickness (in.)	2.5	2.75	3	3.25	3.5	4	4.25	4.5	5	5.25
Units	Concrete Volume (yd ³ / 100 ft ²)	1.3	1.34	1.4	1.5	1.6	1.70	1.8	1.9	2.1	2.2

COMSLAB® UL/ULC FIRE RATINGS



Both: CS120 (4.75" d.d) and CS210 (8.00" d.d)

Assembly Rating, Hourly	2	2	2	1
Concrete Type	NW Siliceous	NW Carbonate	LW	NW or LW
Concrete Topping, from Deck Crests, in. - Type 210	3-9/16	3-1/2	2-3/4	2-1/2
Concrete Topping, from Deck Crests, in. - Type 120	4-1/4	4-1/4	3-1/4	2-1/2

Contact COMSLAB® USA for additional UL listings available.





COMSLAB®

Long Span Concrete Floor System



COMSLAB® BENEFITS

The COMSLAB® System from Bailey USA is a UL rated, structurally superior long-span composite floor. It's a project-specific designed for use in all types of multi-story buildings, long-term care facilities, office/commercial buildings, schools & hospitals. COMSLAB® will accommodate all wall systems, including cold form steel, structural steel, and masonry of all types. It is a proven, reliable and cost-effective long-span composite steel deck.



BUILDING EFFICIENTLY WITH COMSLAB®



SAVES TIME!

- Fast installation with minimal Labour
- Nestable panels ship efficiently
- Stay-in-place panels improve construction schedule
- No additional fire proofing needed



SAVES MONEY & MATERIALS!

- Use up to 40% less concrete
- Use up to 60% less rebar
- Significant reduction in temp shoring
- Lightweight for reduced dead load, saving on foundation and superior structure



WINNING PERFORMANCE!

- Long clear spans over 30 ft
- 1 & 2 hr UL Fire rating for CS120 (4.75" deck)
- 1, 2 & 3 hr UL Fire rating for CS210 (8" deck)
- Excellent STC & IIC performance
- Deck profile enables services to run within system space
- Use with all structural types



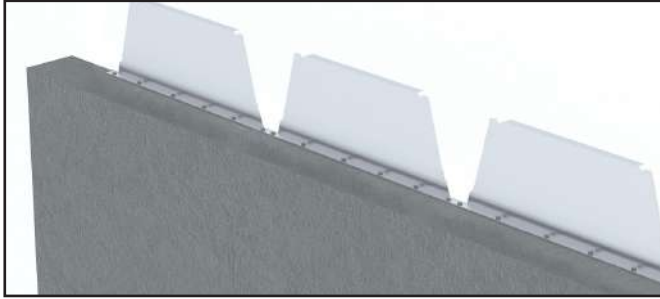
COMSLAB®

Long Span Concrete Floor System

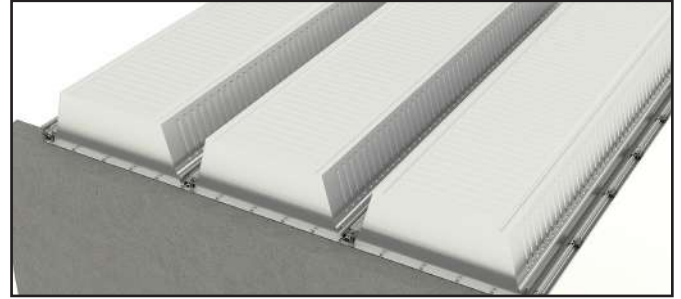


COMSLAB® INSTALLATION PROCESS

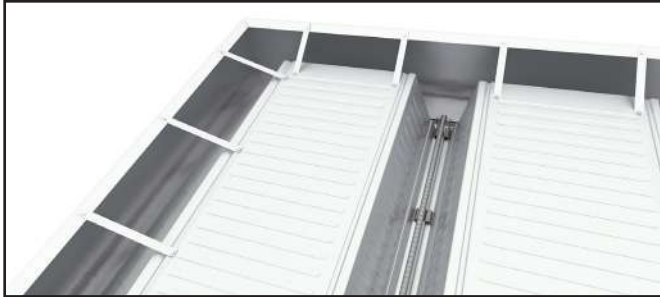
1. Fasten and align end closures to supporting structure



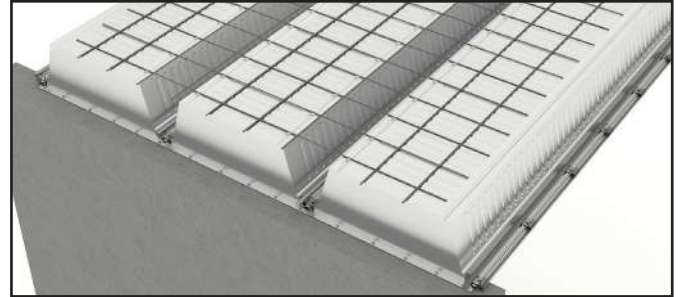
2. Place and Fasten COMSLAB® Deck



3. Place perimeter trims and restraint strap



4. Rib Reinforcement and mesh placement



5. Secure shoring



6. Place Concrete



COMSLAB® SYSTEM COMPONENTS



End Closure



Rebar Chair



Sidelap Washer



Restraint Strap



Perimeter Trims



Inside Trim



Fasteners



COMSLAB®

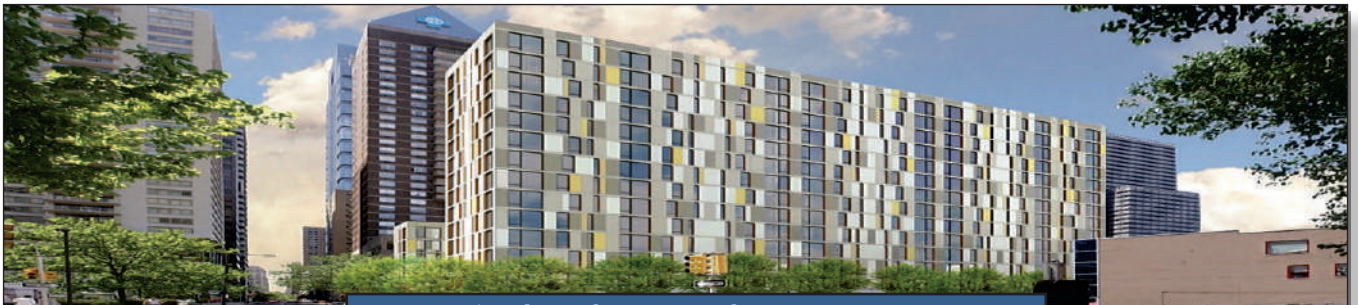
Long Span Concrete Floor System



COMSLAB® PROJECTS



Hospitality - The Ritz Carlton, Aruba, Dutch Caribbean



Mixed Used - 1900 Arch Street, PA, USA

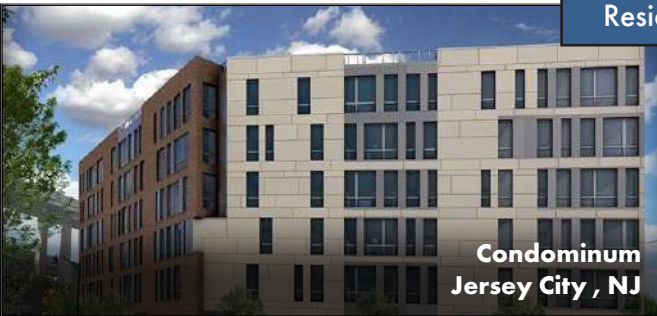


The MC Hotel
Montclair, NJ



Apartment Residence
Honolulu, HI

High Rise &
Low Rise
Residential



Condominium
Jersey City, NJ



Condominium
Ville-Marie, Montréal

www.comslab-usa.com

CONTACT US

1199 S FEDERAL HWY., Suite 301, Boca Raton, Florida, 33432
1.800.668.2154 | www.comslab-usa.com | info-comslab@bmp-group.com

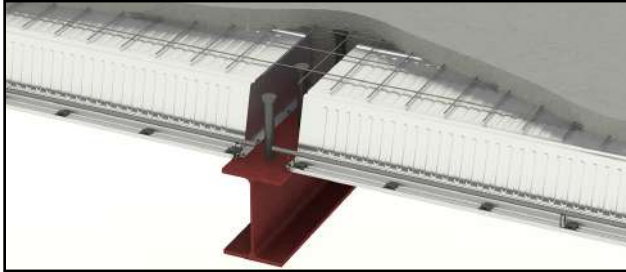


COMSLAB[®]
Long Span Concrete Floor System

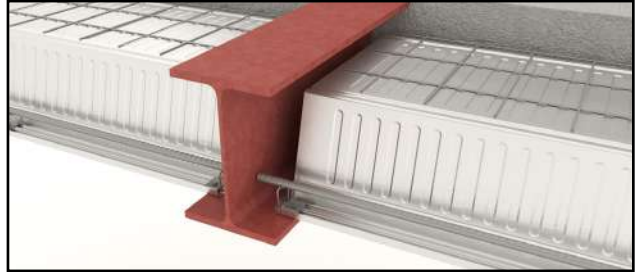


COMSLAB[®] DESIGN VERSATILITY

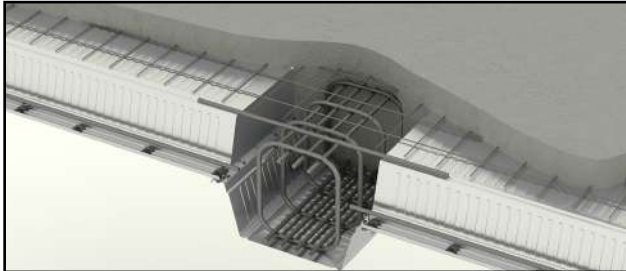
Structural Steel Beam



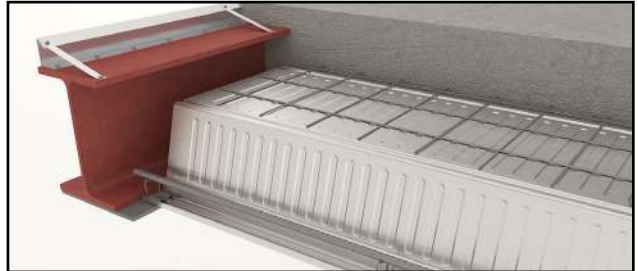
Structural Steel Inside Beam with Bottom Plate



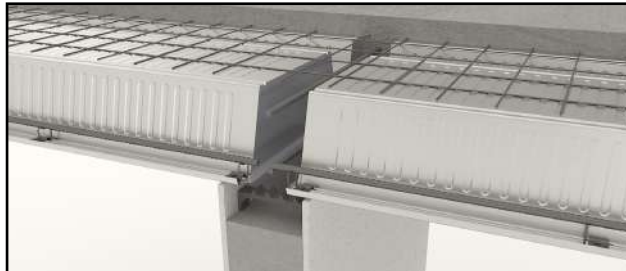
Inverted COMSLAB[®] Beam



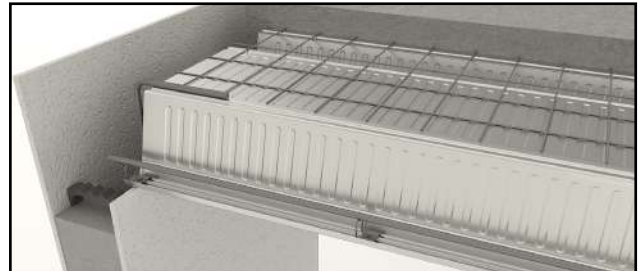
Structural Steel Edge Beam with Gusset Plate



Concrete Inside Wall



Concrete Outside Wall



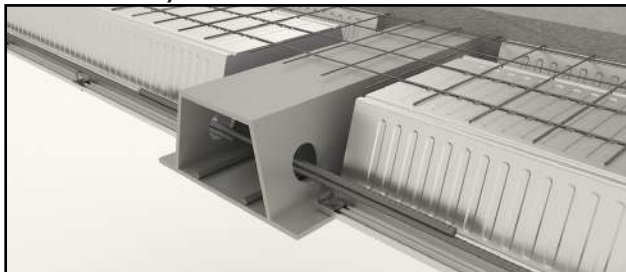
Cold Form Steel Framing Inside Wall



Cold Form Steel Framing Outside Wall



Deltabeam[®] by Peikko[®]



Versa: T beam by Diversakore[®]

