

# BAILEY® REDHEADER PRO™

## ROUGH OPENING SYSTEM\*

**BAILEY® RedHeader PRO™ cuts your labour time in half**

Building professionals require a solution that eliminates the labour intensive and expensive field assembly of rough opening components using standard wall framing members.

The new **BAILEY® RedHeader PRO™** cuts on-site labour by up to 50% by reducing the number of wall framing components required to frame windows and doors. The superior strength to weight ratio of the new system means *higher performance with fewer components*. The **BAILEY® RedHeader PRO™** one-piece header and jamb replaces conventional boxed headers and built-up jambs which require multiple studs, tracks and screws.

**BAILEY® RedHeader PRO™** Rough Opening System consists of three components:

- Header
- Jamb stud
- Header bracket

### APPLICATIONS

- Exterior curtain wall headers and jambs
- Interior non-load bearing headers and jambs

### BENEFITS

- Reduces assembly time by up to 50% by eliminating built-up jambs and boxed or lay-in headers
- ClarkDietrich RedHeader PRO™ header bracket with predrilled holes provides an easy connection between the header and the jamb
- Eliminates "capped" members, allowing drywall screws to drive through only one thickness of material
- Opened jamb and headers studs do not require pre-insulating prior to installation
- Ready to install: Precut headers and jambs to specified lengths eliminate field cutting and reduce waste
- Offers a flush framing base that provides better quality drywall finish
- Extra long 1" return legs allow for ease of attachment
- Green building material: Makes the buildings more environmental friendly by reducing material and waste

### INSTALLATION

- Fasten the RedHeader PRO™ header bracket to the jamb stud at header location with 4 screws using the pre-punched screw holes
- Slide the header into the header bracket and fasten it to the bracket with 4 screws
- For more information please see installation video on [www.bmp-group.com/products/RedHeader](http://www.bmp-group.com/products/RedHeader)

### ORDERING INFORMATION

- Submit your list of materials to your sales representatives
- Custom length header and jamb studs are available
- Headers must be ordered 1/2" shorter than the opening to accommodate the attachment clip (header length = inside of jamb to inside of jamb minus 1/2")



\* Bailey RedHeader PRO™ headers and jambs are produced by Bailey Metal Products in Canada under permission granted by ClarkDietrich Building Systems. RedHeader PRO™ is a trademark of ClarkDietrich.

[sales@bmp-group.com](mailto:sales@bmp-group.com) | [www.bmp-group.com](http://www.bmp-group.com)



**BAILEY®**  
METAL PRODUCTS LIMITED

**MONTREAL**

800-263-3455

[commande@bmp-group.com](mailto:commande@bmp-group.com)

**TORONTO**

800-668-2154

[tor-orders@bmp-group.com](mailto:tor-orders@bmp-group.com)

**CALGARY**

800-665-2013

[cal-orders@bmp-group.com](mailto:cal-orders@bmp-group.com)

**EDMONTON**

800-563-1751

[edm-orders@bmp-group.com](mailto:edm-orders@bmp-group.com)

**VANCOUVER**

800-818-2666

[van-orders@bmp-group.com](mailto:van-orders@bmp-group.com)

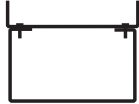
# REDHEADER PRO™

## ROUGH OPENING SYSTEM\*



- **BAILEY® RedHeader PRO™** Rough Opening System reduces assembly time by up to 50% and material costs by up to 25% by eliminating built-up jambs and boxed on lay-in headers.

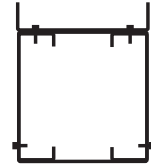
### RedHeader header



**REPLACES**  
Lay-in header



**OR**  
Boxed header



- 1 header stud
- 1 track for cripple attachments
- 2 screws

- 1 stud
- 2 tracks
- 4 screws

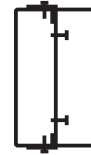
- 2 studs
- 2 tracks
- 4 screws

### RedHeader jamb

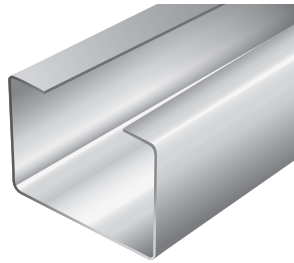


- 1 jamb stud

**REPLACES** Built-up jamb

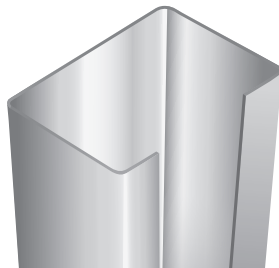


- 2 studs
- 1 track
- 4 screws



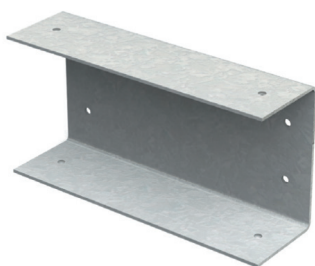
REDHEADER PRO™ HEADER

PRODUCT	GAUGE	MILS	DEPTH (in)
Header	20	33	3 5/8 4 6 8 (not available for 20ga)
	18	43	
	16	54	
	14	68	
	12	97	



REDHEADER PRO™ JAMB

PRODUCT	GAUGE	MILS	DEPTH (in)
Jamb	20	33	3 5/8 4 6 8 (not available for 20ga)
	18	43	
	16	54	
	14	68	
	12	97	



REDHEADER PRO™  
HEADER BRACKET

PRODUCT	GAUGE	SIZE (in)	FITS REDHEADER PRO™ SYSTEM SIZE (in)
Header Bracket	20	3-1/2	3-5/8 with 3" flange
		3-1/2	3-5/8 with 3-1/2" flange
	14	3-7/8	4 with 3" flange
		3-7/8	4 with 3-1/2" flange
	12	5-7/8	6 with 3" flange
		5-7/8	6 with 3-1/2" flange
		7-7/8	8 with 3" flange
		7-7/8	8 with 3-1/2" flange

sales@bmp-group.com | www.bmp-group.com



**BAILEY**  
METAL PRODUCTS LIMITED

**MONTREAL**  
800-263-3455

commande@bmp-group.com

**TORONTO**  
800-668-2154

tor-orders@bmp-group.com

**CALGARY**  
800-665-2013

cal-orders@bmp-group.com

**EDMONTON**  
800-563-1751

edm-orders@bmp-group.com

**VANCOUVER**  
800-818-2666

van-orders@bmp-group.com

